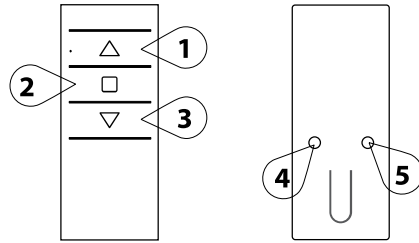




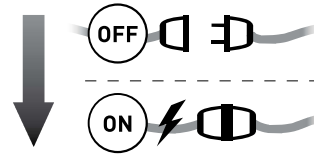
Gaposa Motor Quick Programming Guide



The buttons shown on the left are used to program the transmitters and specific channels. The programming buttons (buttons 4 and 5) locations can be placed differently depending on the transmitter model. Shown in this guide is the Emitto Slim line transmitter.

- UP (1)** the motor lifts the rolling shade/awning up
- STOP (2)** the rolling shade/awning stops
- DOWN (3)** the rolling shade/awning goes down
- SYNC (4)** program the transmitter
- LIMIT (5)** set limits

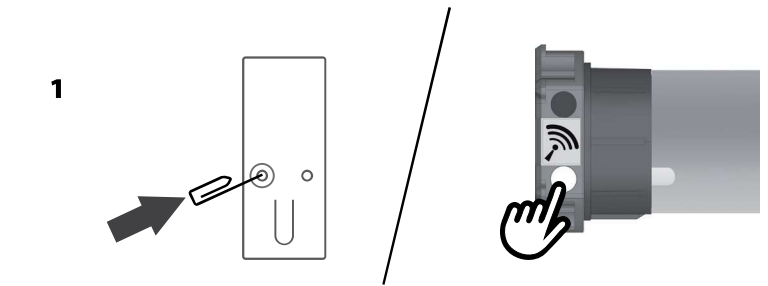
CONNECT POWER TO THE MOTOR



PROGRAMMING A TRANSMITTER (Sec. 1)

- Press and hold **SYNC** button on the back of transmitter or the white button on the head of the motor until the motor starts moving
- Check the motor rotation (**UP** or **DOWN**) then release the **SYNC** button or the white button (the motor now stops)
- Within 5 seconds, press the corresponding button (**UP** if the motor turns upwards or **DOWN** if the motor turns downwards.) This will set the direction of the motor. If the incorrect button is pressed, the controls will be reversed. To fix, see Sec. 3.

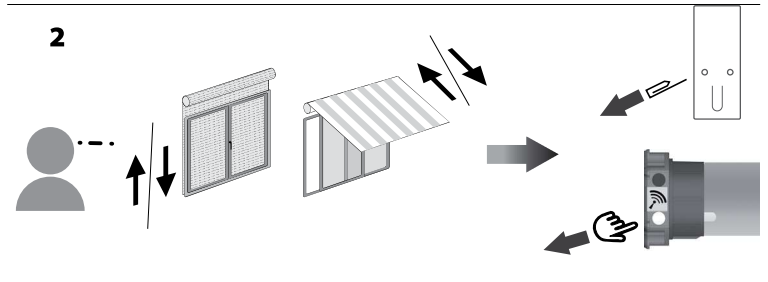
Transmitter is now programmed



ADDING A NEW TRANSMITTER (Sec. 2)

- Press and hold the **SYNC** button on the back of a transmitter **ALREADY** paired until the motor starts moving in one direction
- Check the motor rotation (**UP** or **DOWN**) then release the **SYNC** button (the motor now stops)
- Within 5 seconds, press the corresponding button (**UP** if the motor turns upwards or **DOWN** if the motor turns downwards) on the NEW transmitter being added. This will set the direction of the motor. If the incorrect button is pressed, the controls will be reversed. To fix, see Sec. 3.

Additional transmitter is now added

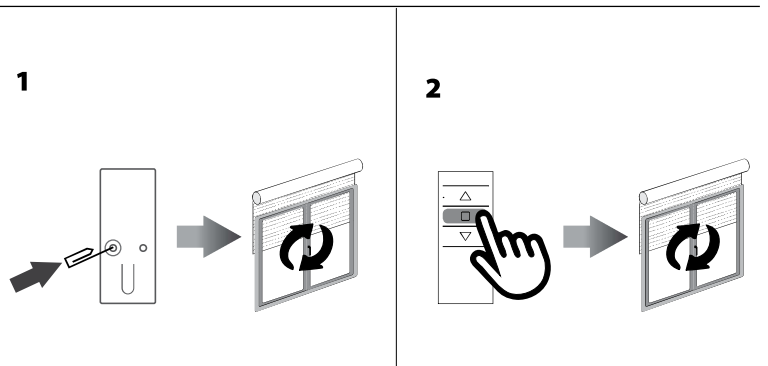
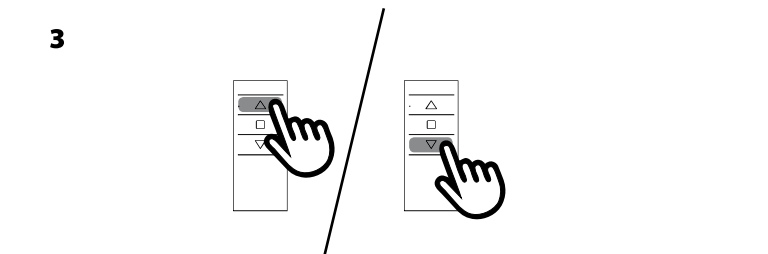


CHECKING / CHANGING DIRECTION (Sec. 3)

To check the direction, press the UP or DOWN button. The motor will go UP or DOWN accordingly, if the direction needs to be changed:

- Press and hold the **SYNC** button on the back of transmitter until the motor starts moving
- Press the **STOP** button; the motor makes a brief jog. The direction of the motor has been reversed

IMPORTANT: the change of direction of procedure must be performed before initiating the limit setting procedure, otherwise limits must be reset





SETTING THE LIMITS (Sec. 4) IT IS MANDATORY TO SET THE "UP" LIMIT FIRST EVERY TIME

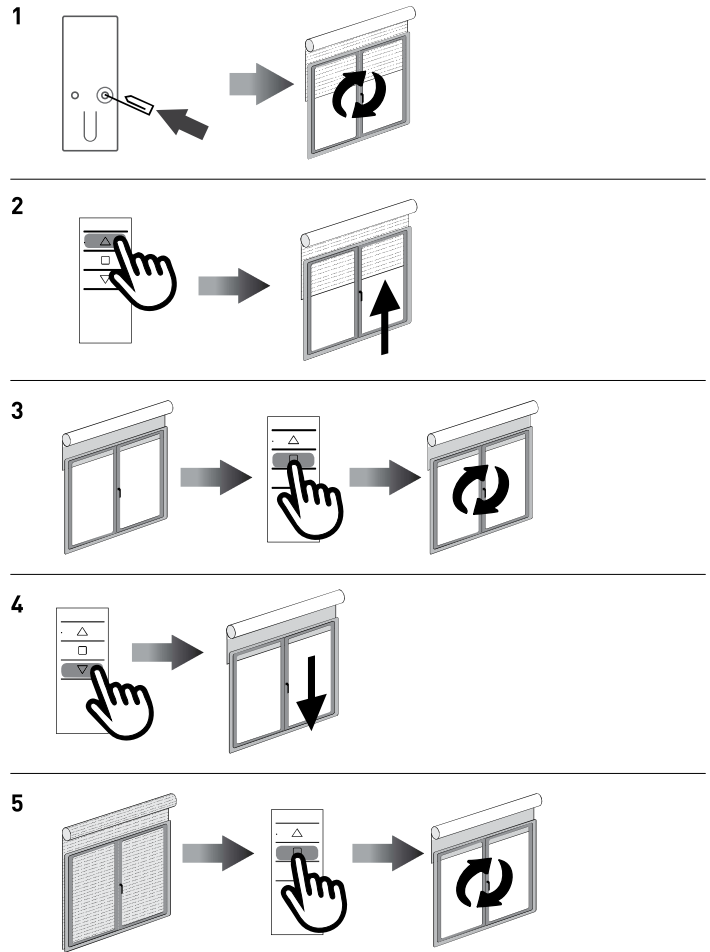
Run the motor to an intermediate position inbetween the two desired limits. The motor needs to move in the direction of the limit in order for the limit to be properly set.

- 1 Press and hold the LIMIT button on the back of transmitter until the motor makes a brief jog

Note: during "limit setting mode" the operations are in "deadman control" (The UP and DOWN buttons must be held down in order to move the motor.)

- 2 Press and hold the UP button and run the motor to the desired UP limit position.
- 3 Press the STOP button to set the UP limit position. The motor makes a brief jog to confirm.
- 4 Press and hold the DOWN button and run the motor to the desired DOWN limit position.
- 5 Press the STOP button to set the DOWN limit position. The motor makes a brief jog to confirm.

Note: Accurate limit setting can be performed by pressing the LIMIT button a second time: the motor will then reduce its output speed, moving slowly in steps towards the desired limit. Always press the STOP button to set the limit position.



SETTING THE LIMITS INDIVIDUALLY (Sec. 5)

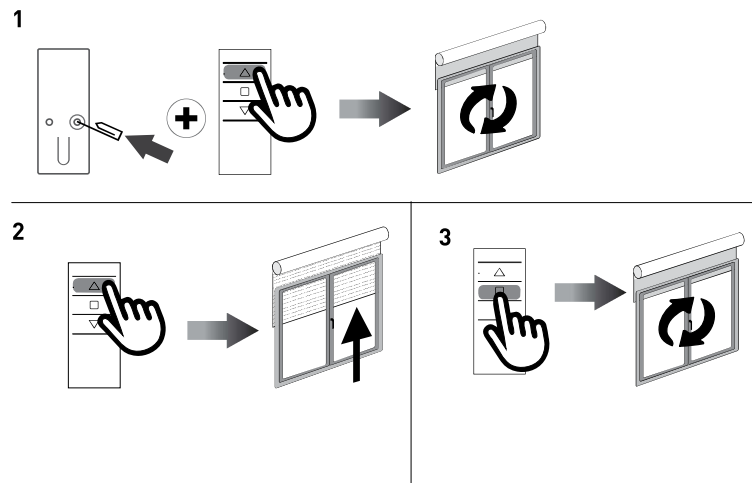
If the limits need to be changed after the initial limit setting procedure, it is possible to change the limit positions individually. One limit can be set without the other limit needing to be set. The motor can be in any position to initiate the procedure.

TO CHANGE THE UP LIMIT:

- 1 From any point between the existing limits, press and hold both the LIMIT button and the UP button until the motor makes a brief jog.

Note: during "limit setting mode" the operations are in "deadman control" (The UP and DOWN buttons must be held down in order to move the motor.)

- 2 Press and hold the UP button until the desired new UP limit is reached.
- 3 Press the STOP button to set the limit. The motor makes a brief jog to confirm. The new UP limit is set.

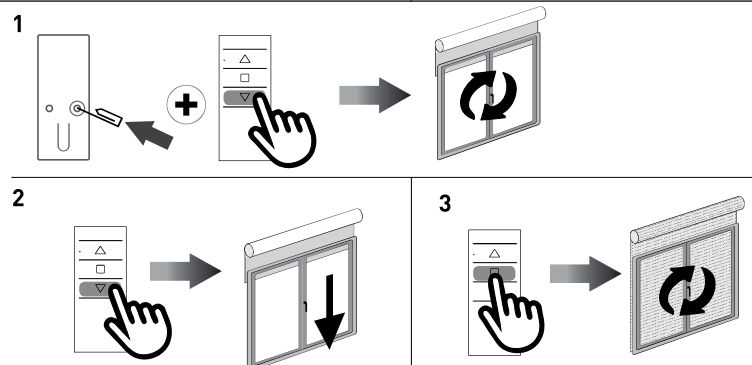


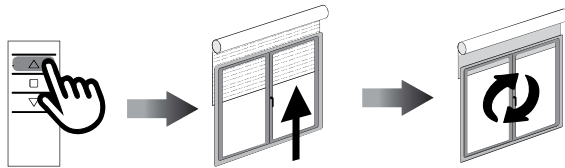
TO CHANGE THE DOWN LIMIT:

- 1 From any point between the existing limits, press and hold both the LIMIT button and the DOWN button until the motor makes a brief jog.

Note: during "limit setting mode" the operations are in "deadman control" (The UP and DOWN buttons must be held down in order to move the motor.)

- 2 Press and hold the DOWN button until the desired new DOWN limit is reached.
- 3 Press the STOP button to set the limit. The motor makes a brief jog to confirm. The new DOWN limit is set.



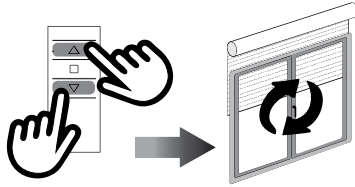


AUTOMATIC SETTING OF THE LIMITS (Sec. 6)

For limits set with torque sensor (mechanical stop of shutters or cassette awnings/shades), press and hold the UP button until the bottom bar hits the cassette or shutter box. A short jog will indicate that the UP position has been memorized. The same procedure can be followed for the DOWN limit but only for roller shutters.

PREFERRED POSITION (Sec. 7)

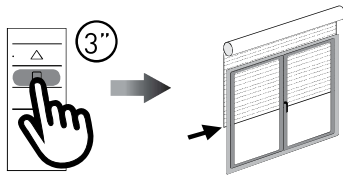
1. SETTING AN PREFERRED POSITION



Operate the motor to and stop it at the desired intermediate position, then press both the UP and DOWN buttons together until the motor makes a brief jog to confirm.

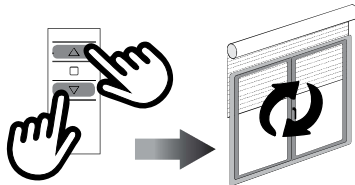
The intermediate position is now set.

2. RECALLING THE PREFERRED POSITION



Press and hold the STOP button for 3 seconds: the motor will move to and stop at the intermediate position.

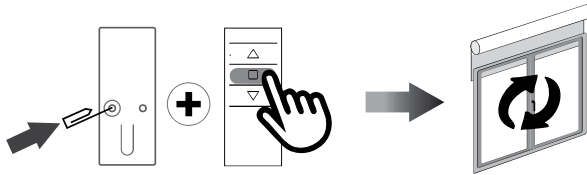
3. ERASING THE PREFERRED POSITION



Press both the UP and DOWN buttons until the motor makes a brief jog to confirm.

The intermediate position is now erased.

DELETING A TRANSMITTER OR A CHANNEL (Sec. 8)

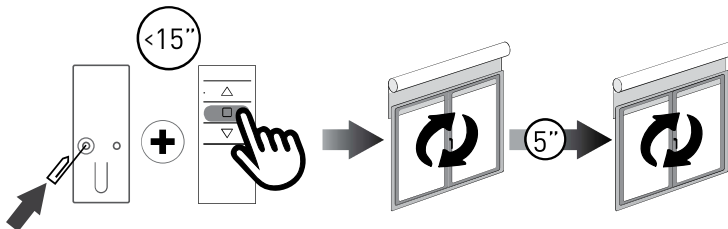


Using the transmitter to be deleted press and hold both the SYNC and STOP buttons until the motor makes a brief jog to confirm.

Only the transmitter used for this procedure has been deleted from motor memory

RESET TRANSMITTER MEMORY (Sec. 9) (DELETING ALL THE TRANSMITTERS OR CHANNELS OR SENSORS)

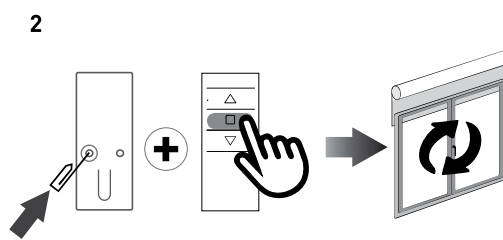
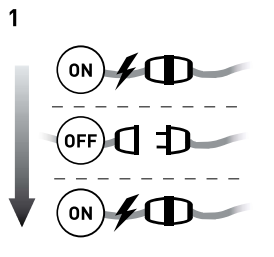
Option 1 - Using a programmed transmitter



Press and hold both the SYNC and STOP buttons for at least 15 seconds: to confirm that the operation has completed, the motor first makes a brief jog and after 5 seconds it makes an additional jog. This operation will not be successful unless it makes both jogs.

Memory is now empty

Option 2 - Using a new transmitter without ID (not paired).

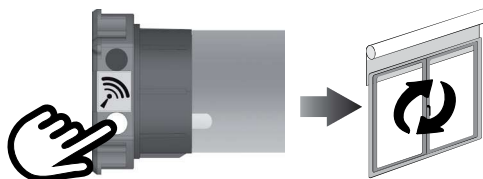


1 Switch the power to the motor OFF, then switch it back ON.

2 Within 8 seconds, using any Gaposia transmitter, press and hold both the SYNC and STOP buttons until the motor makes a jog.

Memory is now empty

Option 3 - White button on the head of the motor



Press and hold the white button on the head of the motor until it makes a jog.

All transmitters have been erased.